

H3C S7500E



Front, left to right: H3C S7502E and S7503E.
Back, left to right: H3C S7506E, S7510E and S7506EV.

Overview

The H3C® S7500E Series is the next generation of multi-layer switches, meeting the evolving needs of integrated services networks.

This switch can be deployed in multiple network environments like the enterprise LAN core, aggregation and wiring closet edge, as well the convergence and edge of Metropolitan Area Networks (MANs).

A passive backplane and support for load sharing and redundant management and fabrics helps the S7500E offer high availability. With modern ASICs, high-speed backplanes and the latest distributed ASIC switching technology, this switch delivers wire speed Layer 2 and Layer 3 routing services for the most demanding applications, while providing long term investment protection.

Supporting high-reliability technologies such as non-stop forwarding (NSF) and ring network protection, the S7500E helps ensure maximum uptime, improving productivity and reducing the total cost of ownership. This switch series is environmentally friendly, meeting the Restriction of the Use of Certain Hazardous Substances in Electrical and Electronic Equipment (RoHS) standards.

The H3C S7500E Series features five chassis models, providing flexibility based on the switching capacity and interface port density required:

- › S7510E with 12 slots,
- › S7506E with eight slots,
- › S7506E-V with eight vertical slots,
- › S7503E with five slots, and the
- › S7502E with four slots.

Key Benefits

Modern Architecture

The S7500E chassis has been designed to allow for long term investment protection. The backplane traces will allow for higher bandwidth and increased power in the future. Intelligent power and environmental management make these changes possible. The system uses a new generation of ASICs, with the ability to support emerging standards. These new ASICs are also more energy efficient. With a choice of five different chassis, users have increased configuration flexibility. Fabrics and modules can be used across all chassis.

Extensive Feature List

The S7500E provides all the features expected in a high-end modular chassis used for demanding Enterprise core, distribution and aggregation applications:

- › Separate data and control paths for added security and performance
- › Extensive Quality of Service (QoS) features for mission critical applications including Voice over IP (VoIP), storage and video
- › Comprehensive security for network access control, encryption and protection of corporate resources
- › Extensive CLI capabilities, with available GUI
- › An open, standards-based architecture to enable seamless growth and future investments without proprietary lock-ins.

Resilient Architecture for Business Continuity

The S7500E has a high-availability design including passive backplane, load sharing fabrics and management modules and redundant power supplies. All elements in the system can be hot-swapped, minimizing the impact of single component

Key Benefits (continued)

failure. Changes in network topology due to device or link failures can lead to disruption of service for critical business applications. Rapid recovery from such topology changes is achieved with features such as Multiple Spanning Tree Protocol (MSTP), Rapid Spanning Tree Protocol (RSTP), OSPF Equal Cost Multi Path (ECMP) and Virtual Router Redundancy Protocol (VRRP).

The S7500E also supports Rapid Ring Protection Protocol (RRPP), which allows the creation of fast recovery rings using standard Ethernet technology.

Convergence Support

Real-time applications such as VoIP demand high QoS and differentiated service levels to function properly. The S7500E provides robust QoS and advanced traffic management features, allowing critical applications to be prioritized and serviced as dictated by the needs of the organization.

Additionally, the S7500E supports industry-standard IEEE 802.3af Power over Ethernet (PoE) to provide both electrical power and network connectivity to PoE-capable devices such as IP telephones and wireless access points, making the switches ideal for large-scale edge deployments. PoE simplifies network deployments by eliminating the need for separate data and power infrastructures.

The S7500E supports flexible PoE solutions including hybrid power supplies providing both data and power.

Extensive Security Features

Security is paramount in today's enterprise. The S7500E delivers advanced security including user and device authentication, policy-based access control lists (ACLs), encrypted protocol headers and system management access.

The S7500E supports IEEE 802.1X Network Login along with RADIUS to allow user access control. Port, VLAN and MAC address authentication allow for additional security.

Scalable Performance

The S7500E has a 2.4 Tbps backplane, providing enhanced performance and future expansion capability. With dual fabrics, the switch delivers up to 488 Mpps throughput.

A wide selection of modules allow a single switch to support up to 24 10-Gigabit and 480 Gigabit and Fast Ethernet ports. Flexible modules combine 10-Gigabit and Gigabit in a single module. All fiber-based Gigabit modules support both 100BASE-FX and 1000BASE-X transceivers.

Standards-based link aggregation—supported across modules—allows aggregating multiple links together as a trunk.

Enterprise-Class Management

The S7500E features independent data and control paths. The dedicated data channel provides high-speed data switching and packet forwarding, while a separate management channel provides control, monitoring and route learning and distribution.

Comprehensive management features allows the switch to provide enterprise-wide visibility and control to IT staff for configuration, network monitoring and advanced troubleshooting. Switch management is accessible through an industry standard CLI, an intuitive GUI, a Web-based interface, or SNMP, with hierarchical access controls and password protection.

Additional switch management security is provided through the user authentication and encryption capabilities of SNMP v3 and SSH v2, further reducing the likelihood of unauthorized access or snooping of management traffic.

FEATURE SUMMARY

Modern modular multilayer switch with flexible, resilient architecture for deployment in enterprise core, distribution and edge applications
High-density wire-speed 10 Gigabit (up to 24 ports) and Gigabit and Fast Ethernet (up to 480 ports)
Up to 2.4 Tbps backplane capacity with up to 488 Mpps system throughput
Virtually non-stop operation with redundant/ load sharing fabrics and management modules, redundant power supplies, and hot swappable modules. Supports fast recovery Rapid Ring Protection Protocol (RRPP) for MAN application
Granular QoS and traffic management for enhanced availability
Extensive L2/L3/L4 switching and routing capability, including RIP, OSPF, BGP-4, IS-IS and IPv6. IPv6 support includes dual stack, tunneling and IPv6 ACLs
Robust network access control via IEEE 802.1X and RADIUS, extensive ACLs, as well as authentication and encryption of management traffic

Networking Application

High Density Wiring Closet (Integrated Network)

Conventional wireless networking modes cannot meet the requirements of IPv6, wireless security, user management, wireless voice services etc. The S7500E wireless controller + FIT AP control structure realizes centralized AP management and configuration. It supports centralized user right distribution and control, auto download of configuration files by AP, auto upgrade of software, IPv6, wireless security, RF management, L3 roaming, and the deployment of value added services such as voice and video. The S7500E is based on a unified hardware and software platform. Wired and wireless integrated solutions overcome difficulties such as wired and wireless equipment split, and network and user management split. Integrated wired and wireless solutions overcome difficulties associated with separate equipment management and control.

The S7500E Series works well for high density wiring closets. A single switch can provide 480 Gigabit and 100 Fast Ethernet copper ports and 24 10 Gigabit ports. The S7500E supports:

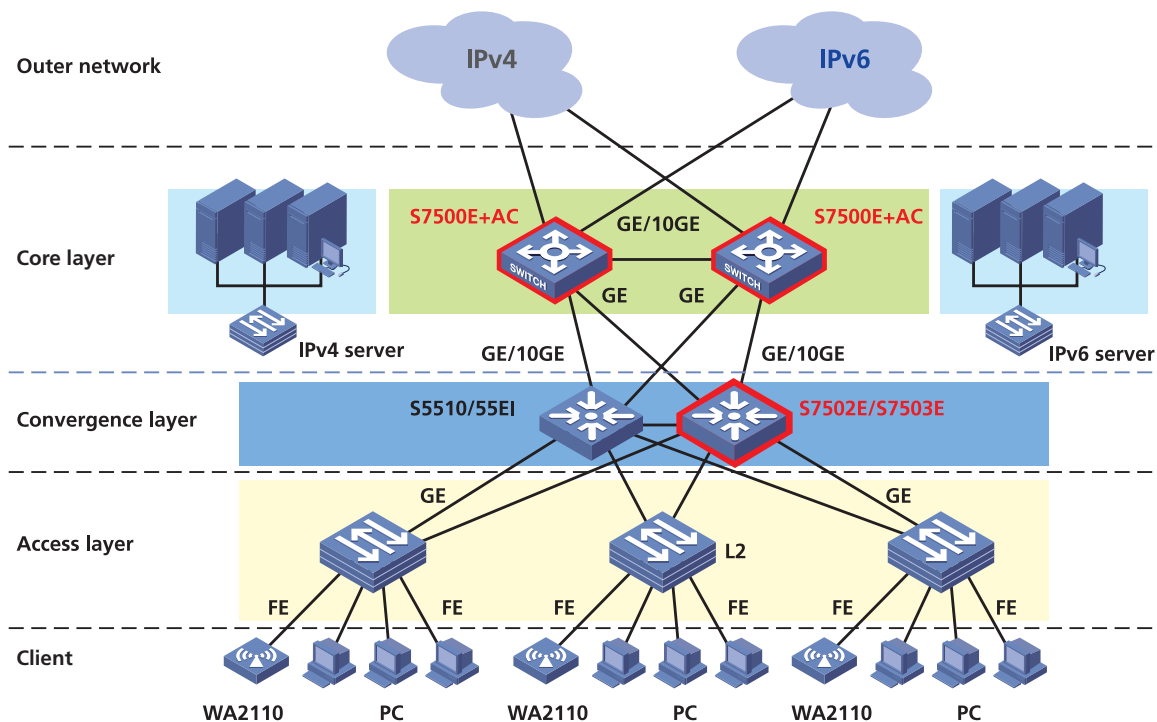
- ▶ IMC EAD, accessing permission granting according to the security status of users
- ▶ PoE, voice and wireless services
- ▶ 8 priority queues per port to meet multimedia requirements such as video and voice
- ▶ High QoS for new services
- ▶ Abundant IPv4/IPv6 multicast protocols to facilitate the deployment of new multimedia services

Integrated IPv6 Campus Network (Wired and Wireless)

High Density Wiring Closet (Integrated Network)

Conventional wireless networking modes cannot meet the requirements of IPv6, wireless security, user management, wireless voice services, etc. The S7500E wireless controller + FIT AP control structure delivers centralized AP management and configuration. It supports centralized policy and enforcement, auto download of configuration files by AP,

auto upgrade of software, IPv6, wireless security, RF management, L3 roaming, and the deployment of value added services such as voice and video. The S7500E is based on a unified hardware and software platform. Integrated wired and wireless solutions overcome difficulties associated with separate equipment management and control.



Aggregate System Capacities

	Switch S7510E	Switch S7506E	Switch S7506E-V	Switch S7503E	Switch S7502E
Chassis slots					
Total slots	12	8	8	5	4
I/O slots	10	6	6	3	2
Performance					
Switching capacity	768 Gbps	768 Gbps	768 Gbps	480 Gbps	192 Gbps
Backplane capacity	2.4 Tbps	1.6 Tbps	1.6 Tbps	1.0 Tbps	400 Gbps
IPv4 IPv6 packet forwarding rate	488 Mpps	488 Mpps	488 Mpps	274 Mpps	143 Mpps
Total port capacity					
10-Gigabit	24	16	16	10	4
Fiber Gigabit	480	288	288	144	96
Copper Gigabit	480	288	288	144	96
Fiber Fast Ethernet	480	288	288	144	96
PoE-capable	yes	yes	yes	yes	no

Service and Support

H3C Global Services offers the resources and talents of a major corporation plus more than two decades of experience in resolving network challenges and delivering business benefits to enterprises around the world.

Global support with a personalized, local focus in the local language helps drive productivity and minimize expenses. Because H3C understands both the technology and the business, we're the partner you need to remain strong and competitive.

Suggested Service, Support and Training Offerings

H3C Guardian SM Maintenance Service	This service provides comprehensive on-site support and includes advance hardware replacement, expedited telephone technical support and software upgrades
H3C Express SM Maintenance Service	This service provides speedy access to H3C shipment of advance hardware replacements (including a four-hour option), expedited telephone technical support and software upgrades
Network Health Check	An activity-auditing service focused on improving network performance and productivity Includes traffic monitoring, utilization analysis, problem identification, and asset deployment recommendations Extensive report provides blueprint for action
Network Installation and Implementation Services	Experts set up and configure equipment and integrate technologies to maximize functionality and minimize business disruption For large and complex sites, implementation services include personalized configuration, project management, extended testing and coaching on network administration
Project Management	Provides extra focus and resources that special projects demand H3C engineers manage entire process from initial specifications to post-project review Using structured methodology, requirements are identified, projects planned and progress of implementation activities tracked
Global Education and Training	Self-paced and instructor-led technology and product courses, plus certification programs

For additional information, please visit www.h3cnetworks.com/services

Product Warranty

The H3C S7500E has a 1-year hardware warranty that includes the power supply and fan assembly.

Specifications (Specifications apply to all models, unless otherwise noted)

Attribute	S7510E	S7506E	S7506E-V	S7503E	S7502E
Unit Switching Capacity	768°/384 Gbps	768°/384 Gbps	768°/384 Gbps	480°/240 Gbps	192 Gbps
Backplane Capacity	≥ 2.4 Tbps	≥ 1.6 Tbps	≥ 1.6 Tbps	≥ 1 Tbps	≥ 400Gbps
IPv4 Packet Forwarding Rate	488 Mpps	488 Mpps	488 Mpps	274 Mpps	143Mpps
Number of Slots	12	8	8 (vertical)	5	4
Number of I/O Slots	10	6	6	3	2
Redundancy	Power supply and MCU redundancy				
Max. Routing Tables	128K				
Max. MAC Addresses	128K				
Layer 2 Features	<ul style="list-style-type: none"> IEEE 802.1P (COS priority) IEEE 802.1Q (VLAN) IEEE 802.1d (STP)/802.1w (RSTP)/802.1s (MSTP) IEEE 802.1ad (QinQ), QinQ and VLAN mapping IEEE 802.3x (full duplex traffic control) and back pressure traffic control (semi-duplex) IEEE 802.3ad (link convergence) and link convergence across boards IEEE 802.3 (10Base-T)/802.3u (100Base-T) IEEE 802.3z (1000BASE-X)/802.3ab (1000Base-T) IEEE 802.3af (PoE) Rapid Ring Protection Protocol (RRPP) Ports across boards and traffic mirroring Port broadcast/multicast/unknown unicast storm suppression Jumbo frame SuperVLAN PVLAN Multicast VLAN+ GVRP LLDP IEEE 802.3ae (10Gbase) VLAN partition based on ports, protocols, subnet and MAC IPv4 				
Routing Features	<ul style="list-style-type: none"> ARP proxy Static route Routing policy IS-IS Equal-cost route OSPF/IS-IS/BGP GR (Graceful Restart) DHCP relay RIPv1/v2 BGPv4 Policy route DHCP server OSPFv2 				
IPv6 Routing Features	<ul style="list-style-type: none"> ICMPv6 DHCPv6 OSPFv3 BGP4+ Manual tunnel 6to4 tunnel ICMPv6 redirection ACLv6 RIPng IS-ISv6 ISATAP IPv6 and IPv4 dual stack 				
Multicast Protocols	<ul style="list-style-type: none"> IGMPv1/v2/v3 IGMPv1/v2/v3 Snooping IGMP filter IGMP fast leave PIM-SM/PIM-DM/PIM-SSM MSDP AnyCast-RP MLDv2/MLDv2 snooping PIM-SMv6, PIM-DMv6, PIM-SSMv6 				
ACL/QoS Features	<ul style="list-style-type: none"> Standard and extended ACL Ingress/Egress CAR, with a granularity of 64Kbps 802.1P/DSCP priority mark/remark Congestion avoidance mechanisms, including Tail-Drop and WRED VLAN-based ACL Traffic shaping 8 queues per port Queue scheduling, including SP, WRR, SP+WRR and CBWFQ Ingress/Egress ACL 				
Supported MPLS Features	<ul style="list-style-type: none"> Layer 3 MPLS VPN MCE Layer 2 VPN: VLL (Martini, Kompella) MPLS OAM 				
Security Mechanisms	<ul style="list-style-type: none"> EAD security solution MAC authentication AAA/radius SSHv1.5/SSHv2 OSPF, RIPv2 and BGPv4 plain text and MD5 cipher text authentications Hierarchical protection for command lines to prevent unauthorized and illegal access. Users of different levels are granted different configuration rights. Telnet and password authentication for restricted IP addresses Bindings of IP addresses, VLAN ID, MAC addresses and ports uRPF Active/standby data back-up scheme Error alarm and auto restore Data log Portal authentication IEEE 802.1x and IEEE 802.1x server HWTacacs and command line verification ACL traffic filtering scheme 				

*Requires two Salience-VI Switch and Route Processing Units.

Specifications (Continued)

Attribute	S7510E	S7506E	S7506E-V	S7503E	S7502E
System Management	<ul style="list-style-type: none"> • FTP, TFTP and Xmodem • SNMP v1/v2/v3 • sFlow traffic accounting 				
Reliability	<ul style="list-style-type: none"> • MCU 1+1 redundancy back-up • Power supply 1+1 redundancy back-up • Passive backplane design • Hot swap of all boards • VRRP • Ethernet OAM (802.3ah) 				
Environmental Requirements	<ul style="list-style-type: none"> • RMON • NTP clock • RRPP • Graceful restart for OSPF/BGP/IS-IS • DLDP • VCT • Smart-link • Hot fix 				
Security Specification and EMC Certification	Operating temperature: 0° to 45°C (32° to 104°F) Storage temperature: -10° to 70°C (14° to 158°F) Humidity (operating and storage): 10% to 90% non-condensing				
Power Supply	Input DC: -48V to -60V Input AC: 100V to 240V Maximum output power: 650W (S7502E), 1400W/2800W (S7503E/S7506E-V/S7506E/S7510E)				
PoE Power Supply	Built-in PoE power supply				
Dimensions (W x H x D) (mm)	436 x 708 x 420	436 x 575 x 420	436 x 930 x 420	436 x 441 x 420	436 x 175 x 420
(in.)	29.2 x 28.1 x 16.7	29.2 x 22.8 x 16.7	29.2 x 36.9 x 16.7	29.2 x 17.5 x 16.7	29.2 x 6.9 x 16.7
Weight (kg)	≤ 96	≤ 77	≤ 94	≤ 63	≤ 27
Weight (lb)	≤ 211	≤ 169	≤ 207	≤ 139	≤ 59

Ordering Information

S7500E Chassis

SKU No.	Product Name
0235A25N	H3C S7510E Ethernet Switch Chassis (10 I/O slots, 2 fabric slots) with Fan
0235A27Q	H3C S7506E Ethernet Switch Chassis (6 I/O slots, 2 fabric slots) with Fan
0235A27S	H3C S7506E-V Ethernet Switch Chassis (6 I/O slots, 2 fabric slots) with Fan
0235A27R	H3C S7503E Ethernet Switch Chassis (3 I/O slots, 2 fabric slots) with Fan
0235A29A	H3C S7502E Ethernet Switch Chassis (2 I/O slots, 2 fabric slots) with Fan

Main Control Unit

SKU No.	Product Name	Description
0231A73L	H3C S7500E Saliency VI-Turbo Switch and Route Processing Unit	1 required; 2 for increased performance and redundancy.
0231A86P	H3C S7500 Saliency VI-Plus Switch and Route Processing Unit	1 required; 2 for increased performance and redundancy.
0231A73J	H3C S7500E Saliency VI-10G Switch and Route Processing Unit with 2 XFP Interfaces	XFP
0231A90L	H3C S7500E Saliency VI-GE Switch and Route Processing Unit with 12 1000BASE-X/100BASE-FX	SFP
0231A73K	H3C S7500E Saliency VI Switch and Route Processing Unit	1 required; 2 for increased performance and redundancy.
0231A861	H3C S7500E Saliency VI-Lite Switch and Route Processing Unit	1 required; 2 for increased performance and redundancy.
0231A73S	H3C S7502E Main Control Unit	1 required; 2 for increased performance and redundancy.
0231A90E	H3C S7503E-S Switching and Routing Processing Unit with 24 1000BASE-X/100BASE-FX Optical Ports, including 8 Combo Ports	1 required; 2 for redundancy.

SA Modules

SKU No.	Product Name	Description
0231A76G	H3C S7500E 48-Port 10/100BASE-TX	RJ45; upgradeable to PoE
0231A76F	H3C S7500E 48-Port 100BASE-FX	SFP
0231A76H	H3C S7500E 48-Port 10/100/1000BASE-TX	RJ45; upgradeable to PoE

SC Modules

SKU No.	Product Name	Description
0231A76T	H3C S7500E 24-Port 10/100/1000BASE-T	RJ45
0231A80H	H3C S7500E 48-Port 10/100/1000BASE-T	RJ45; upgradeable to PoE
0231A79J	H3C S7500E 12-Port 1000BASE-X/100BASE-FX	SFP
0231A76S	H3C S7500E 24-Port 1000BASE-X/100BASE-FX	SFP
0231A80V	H3C S7500E 48-Port 1000BASE-X/100BASE-FX	SFP
0231A76Q	H3C S7500E 2-Port 10GBASE	XFP
0231A76V	H3C S7500E 24-Port 10/100/1000BASE-T RJ45 and 2-Port 10GE XFP	RJ45, XFP
0231A76U	H3C S7500E 24-Port 1000BASE-X/100BASE-FX and 2-Port 10GE XFP	SFP, XFP
0231A90F	H3C S7500E 24-Port 1000BASE-X/100BASE-FX; 8 Combo Ports	SFP
0231A936	H3C S7500E 40-Port 10/100/1000BASE-T and 8-Port 1000BASE-X/100BASE-FX	RJ45, SFP

EA Modules

SKU No.	Product Name	Description
0231A76R	H3C S7500E 12-Port Enhanced 1000BASE-X	SFP
0231A76P	H3C S7500E 1-Port Enhanced 10GBASE	XFP

Ordering Information (continued)

EPON Modules

SKU No.	Product Name
0231A84D	H3C GE SFP Interface Unit (1490nm (Transmit)/1310nm (Receive), 20km, SC/PC)
0231A84G	H3C S7500E 4-Port 1000Base-PX Optical Line Terminal Req. +8-Port 1000BASE-X/100BASE-FX Optical Interface Module (SC), SFP
0231A84H	H3C S7500E 8-Port 1000Base-PX Optical Line Terminal Req. +8-Port 1000BASE-X/100BASE-FX Optical Interface Module (SC), SFP
0231A84J	H3C S7500E 16-Port 1000Base-PX Optical Line Terminal Req. +8-Port 1000BASE-X/100BASE-FX Optical Interface Module (SC), SFP
4501A000	H3C Optical Splitter, 1*32, Single Mode, 1310nm & 1520nm +/-40nm, SC/PC
4501A001	H3C Optical Splitter, 1*2/5:95 (Splitting Ratio), Single Mode, 1310nm & 1520nm +/-40nm, SC/PC
4501A002	H3C Optical Splitter, 1*2, Single Mode, 1310nm & 1520nm +/-40nm, SC/PC
4501A003	H3C Optical Splitter, 1*4, Single Mode, 1310nm & 1520nm +/-40nm, SC/PC
4501A004	H3C Optical Splitter, 1*16, Single Mode, 1310nm & 1520nm +/-40nm, SC/PC
4501A005	H3C Optical Splitter, 1*32, Single Mode, 1310nm & 1520nm +/-40nm, SC/PC, 1U
4501A006	H3C Optical Splitter, 1*8, Single Mode, 1310nm & 1520nm +/-40nm, SC/PC
4501A007	H3C Optical Coupler, Single Mode, 1*2, 1310nm & 1520nm +/- 40nm, SC/PC
4501A008	H3C Optical Coupler, Single Mode, 2*32, Even, SC/PC
4501A009	H3C Optical Coupler, Single Mode, 1*2, 1310nm & 1520nm +/- 40nm, SC/PC
9801A09T	H3C S3100-8C-EPON-EI Ethernet Switch, 8 10/100Base-Tx, 1 EPON, AC Input
9801A09U	H3C S3100-16C-EPON-EI Ethernet Switch, 16 10/100Base-Tx, 1 EPON, AC Input
9801A09V	H3C S3100-26C-EPON-EI Ethernet Switch, 24 10/100Base-Tx, 1 EPON, AC Input

ONU Modules

SKU No.	Product Name
9801A08R	H3C 1-Port Gigabit Ethernet Passive Optical Network Unit B (20km)
9801A10Y	H3C Aolynk ET254-L, 4-port (10/100M-FE) Passive Optical Network Unit-SC

Service Modules

SKU No.	Product Name	Description
0231A832	H3C S7500E Firewall Board	RJ45, Console

Ordering Information (continued)

Optical Modules

SKU No.	Product Name	Description
0231A320	H3C 100BASE-FX SFP Transceiver, Multi-Mode	1310nm, 2km, LC
0231A564	H3C 100BASE-LX SFP Transceiver, Single Mode	1310nm, 15km, LC
0231A089	H3C 100BASE-LH40 SFP Transceiver, Single Mode	1310nm, 40km, LC
0231A090	H3C 100BASE-LH80 SFP Transceiver, Single Mode	1550nm, 80km, LC
0231A562	H3C 1000BASE-SX SFP Transceiver, Multi-Mode	850nm, 550m, LC
0231A563	H3C 1000BASE-LX SFP Transceiver, Single Mode	1310nm, 10km, LC
02312170	H3C 1000BASE-LH40 SFP Transceiver, Single Mode	1310nm, 40km, LC
02312172	H3C 1000BASE-LH40 SFP Transceiver, Single Mode	1550nm, 40km, LC
02312173	H3C 1000BASE-LH70 SFP Transceiver, Single Mode	1550nm, 70km, LC
0231A321	H3C 1000BASE-LH100 SFP Transceiver, Single Mode	1550nm, 100km, LC
0231A085	H3C 1000BASE-T SFP	RJ45
0231A11U	H3C 1000BASE-LX BIDI SFP Transceiver, Single Mode	TX1310/RX1490, 10km, LC
0231A11V	H3C 1000BASE-LX BIDI SFP Transceiver, Single Mode	TX1490/RX1310, 10km, LC
0231A453	H3C 1000BASE-LH70 CWDM SFP Transceiver, Single Mode	1470nm, 70km, LC
0231A454	H3C 1000BASE-LH70 CWDM SFP Transceiver, Single Mode	1490nm, 70km, LC
0231A455	H3C 1000BASE-LH70 CWDM SFP Transceiver, Single Mode	1510nm, 70km, LC
0231A456	H3C 1000BASE-LH70 CWDM SFP Transceiver, Single Mode	1530nm, 70km, LC
0231A449	H3C 1000BASE-LH70 CWDM SFP Transceiver, Single Mode	1550nm, 70km, LC
0231A450	H3C 1000BASE-LH70 CWDM SFP Transceiver, Single Mode	1570nm, 70km, LC
0231A451	H3C 1000BASE-LH70 CWDM SFP Transceiver, Single Mode	1590nm, 70km, LC
0231A452	H3C 1000BASE-LH70 CWDM SFP Transceiver, Single Mode	1610nm, 70km, LC
0231A494	H3C 10GBASE-SR XFP, Multi-Mode	850nm, 300m, LC
0231A438	H3C 10GBASE-LR/LW XFP, Single Mode	1310nm, 10km, LC
0231A41G	H3C 10GBASE-ZR XFP, Single Mode	1550nm, 80km, LC

Power Supplies

SKU No.	Product Name	Description
0231A820	H3C S7500E AC Power Supply	2,800W; PoE
0231A81W	H3C S7500E AC Power Supply	1,400W
0231A79P	H3C S7500E DC Power Supply	1,400W; supports PoE
0231A88R	H3C S7500E Ethernet Switch Share Power Adapter	
0231A81J	H3C PSR650A AC Power Supply	650W
0231A79S	H3C PSR650A DC Power Supply	650W
0231A91D	H3C S7502E AC Power Supply	300W

Bundles

SKU No.	Product Name
0150A08F	H3C S7502E Chassis+Single Master Process Module +12-Port Enhanced 1000BASE-X
0150A08G	H3C S7503E Chassis+Single Salience VI-Turbo +12-Port 1000BASE-X (SFP,LC) [SC]

PoE Upgrade Kit

SKU No.	Product Name	Description
0231A48J	H3C DIMM for PoE Master and Slave Power Management	Mandatory for PoE function

Ordering Information (continued)

Memory

SKU No.	Product Name	Description
0601A004	H3C Industrial Compact Flash Card 256MB	Accessory
0601A003	H3C Compact Flash 512MB	Accessory
0601A001	H3C Compact Flash 1G	Accessory

Spare Fans

SKU No.	Product Name	Description
0231A81E	H3C S7510E Spare Fan	Replacement Fan Assembly
0231A81C	H3C S7506E Spare Fan	Replacement Fan Assembly
0231A81D	H3C S7506E-V Spare Fan	Replacement Fan Assembly
0231A81A	H3C S7503E Spare Fan	Replacement Fan Assembly
0231A81B	H3C S7502E Spare Fan	Replacement Fan Assembly



The H3C S7906E is Certified Green in the 2009 Miercom Green Switches Industry Assessment.

Visit www.H3Cnetworks.com for more information about H3C enterprise solutions.